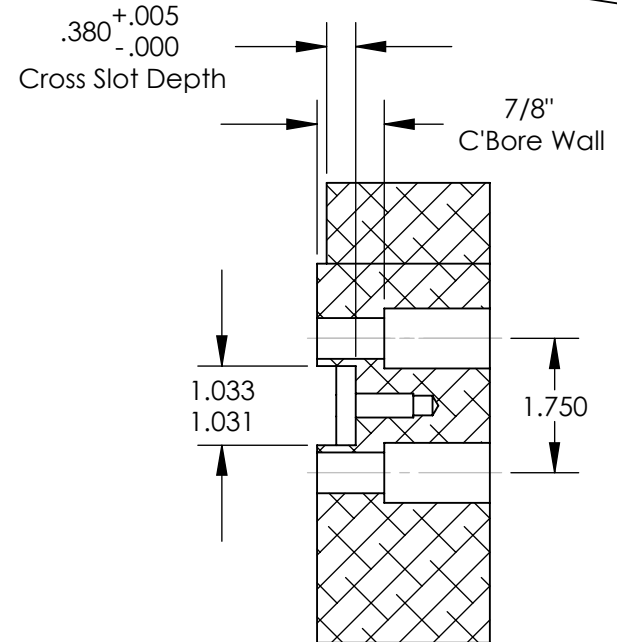
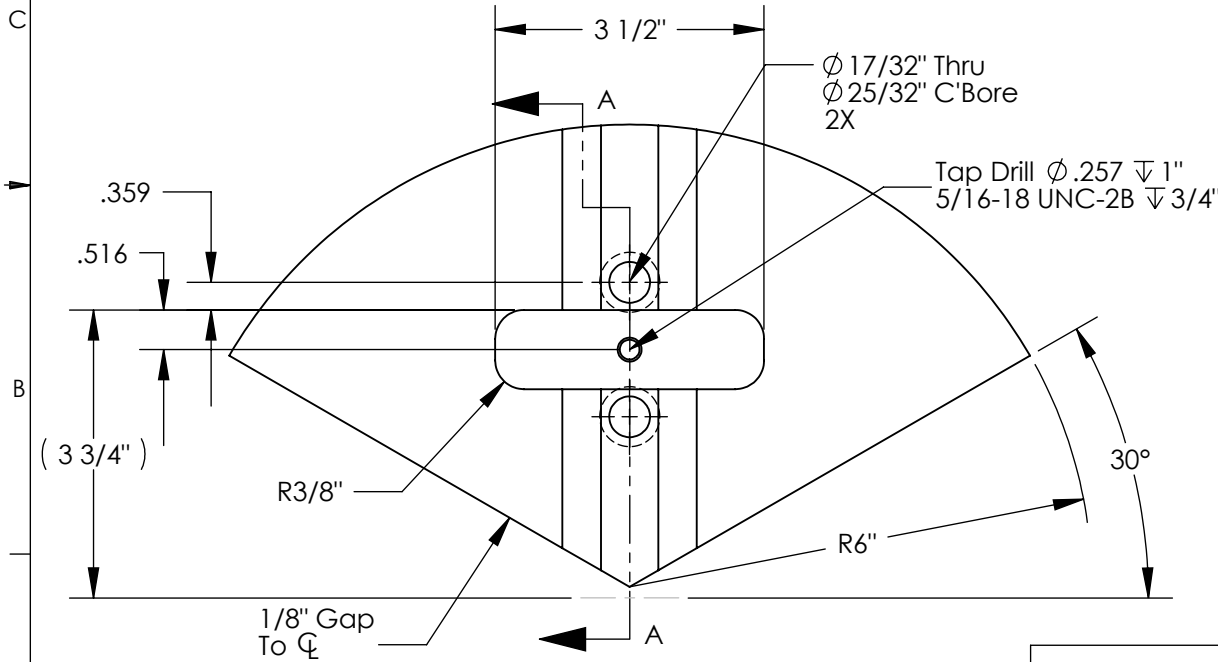
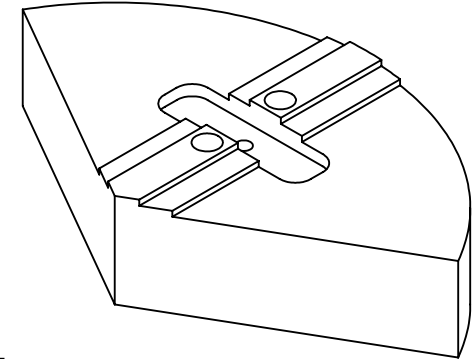
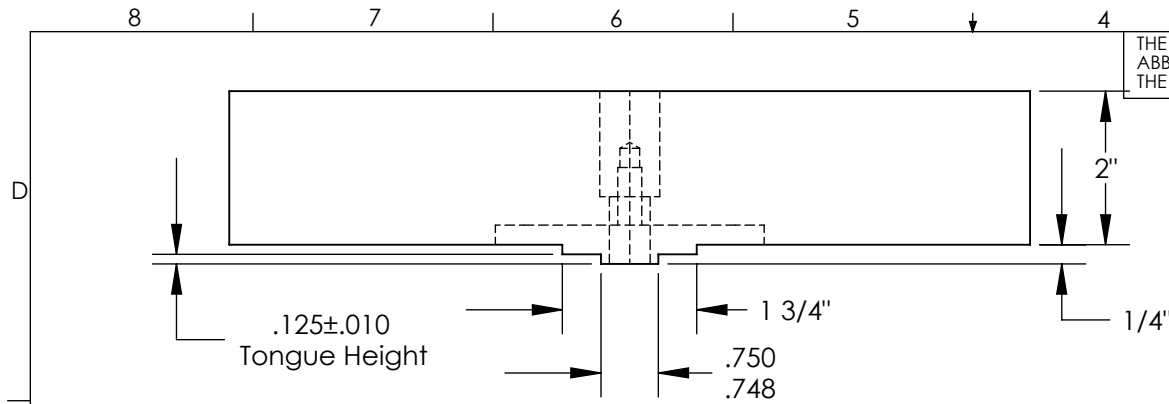


THE INFORMATION CONTAINED IN THIS DRAWING IS THE SOLE PROPERTY OF ABBOTT WORKHOLDING PRODUCTS. ANY REPRODUCTION IN PART OR WHOLE WITHOUT THE WRITTEN PERMISSION OF ABBOTT WORKHOLDING PRODUCTS IS PROHIBITED.



UNLESS OTHERWISE SPECIFIED
DIMENSIONS ARE IN INCHES
TOLERANCES ARE:
FRACTIONS DECIMALS ANGLES
 $\pm 1/32$.XX \pm .015 $\pm 5^\circ$
.XXX \pm .005
.XXXX \pm .0005

| | |
|------------------|-------------------------|
| DRAWN ZGG | DATE 11/02/16 |
| MATERIAL 6061 | WEIGHT (POUNDS) 7.3 |
| STYLE L | DISPOSITION Released |

Abbott Workholding Products

430 McCall Road
Manhattan, KS 66502

785-776-8555

785-587-0004 Fax

800-528-6459

www.abbottworkholding.com

engineering@abbottworkholding.com

CUSTOMER:
Stock

| | |
|------|-----------|
| SIZE | Part Name |
| A | 1210A04P |

| | |
|------|---|
| REV. | A |
|------|---|