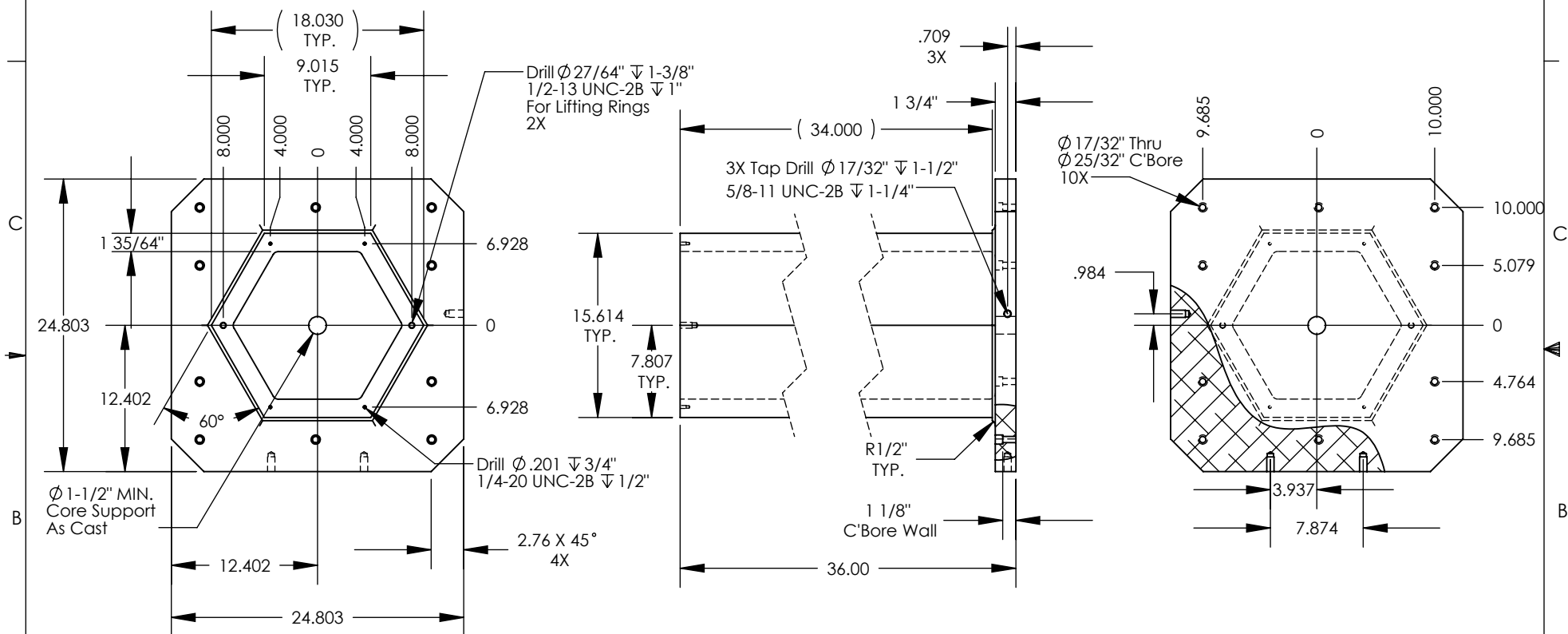


NOTES: Unless otherwise specified.

1. Machined surfaces \perp .001 in 12" \parallel .002 in 12" \square .001 in 12"
2. Deburr and break all sharp edges.

THE INFORMATION CONTAINED IN THIS DRAWING IS THE SOLE PROPERTY OF ABBOTT WORKHOLDING PRODUCTS. ANY REPRODUCTION IN PART OR WHOLE WITHOUT THE WRITTEN PERMISSION OF ABBOTT WORKHOLDING PRODUCTS IS PROHIBITED.

Includes H916TP Top Plate And (2) Lifting Rings Installed



REVISIONS

DATE

BY

UNLESS OTHERWISE SPECIFIED
DIMENSIONS ARE IN INCHES
TOLERANCES ARE:
FRACTIONS DECIMALS ANGLES
+/- 1/32 .XX +/- .015 +/- 5°
.XXX +/- .005
.XXXX ± .0005

MATERIAL
713

Weight (Pounds)
370.4

STYLE
TC

CUSTOMER:
Stock

CAD GENERATED DRAWING,
DO NOT MANUALLY UPDATE

APPROVALS
DRAWN
ZGG
CHECKED

DATE
06/09/20

MATERIAL

MFG

Disposition
Released

Abbott Workholding Products

430 McCall Road
Manhattan, KS 66502
785-776-8555
785-587-0004 Fax
800-528-6459
www.abbottworkholding.com
engineering@abbottworkholding.com

SIZE	Part Name	REV.
A	H93616-630DMG	--

SCALE 1:13 DWG No. H93616-630DMG SHEET 1 OF 1