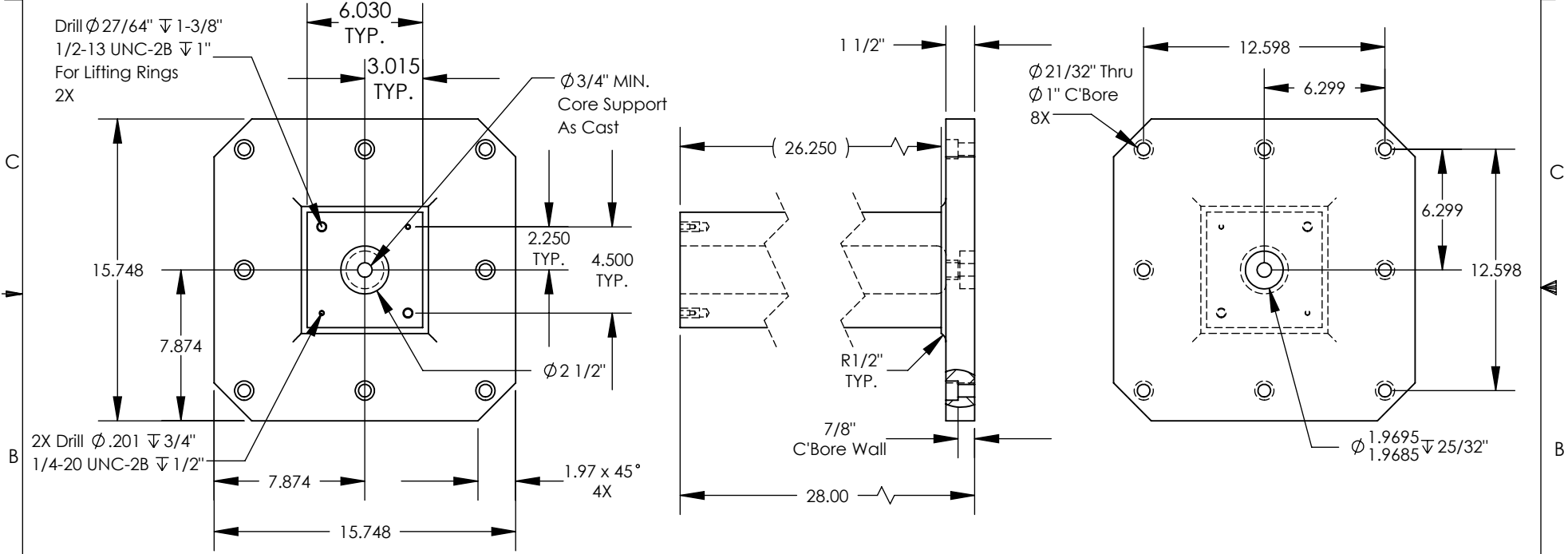


NOTES: Unless otherwise specified.

1. Machined surfaces  $\perp$  .001 in 12"  $\parallel$  .002 in 12"  $\square$  .001 in 12"
2. Deburr and break all sharp edges.

THE INFORMATION CONTAINED IN THIS DRAWING IS THE SOLE PROPERTY OF ABBOTT WORKHOLDING PRODUCTS. ANY REPRODUCTION IN PART OR WHOLE WITHOUT THE WRITTEN PERMISSION OF ABBOTT WORKHOLDING PRODUCTS IS PROHIBITED.

**Includes N6TP Top Plate And (2) Lifting Rings Installed**



|                                                                                                                                                                                           |                          |                                                                                                                                                                                                    |                          |
|-------------------------------------------------------------------------------------------------------------------------------------------------------------------------------------------|--------------------------|----------------------------------------------------------------------------------------------------------------------------------------------------------------------------------------------------|--------------------------|
| UNLESS OTHERWISE SPECIFIED<br>DIMENSIONS ARE IN INCHES<br>TOLERANCES ARE:<br>FRACTIONS DECIMALS ANGLES<br>$\pm 1/32$ .XX $\pm$ .015 $\pm 5^\circ$<br>.XXX $\pm$ .005<br>.XXXX $\pm$ .0005 |                          | <b>Abbott Workholding Products</b><br>430 McCall Road<br>Manhattan, KS 66502<br>785-776-8555<br>785-587-0004 Fax<br>800-528-6459<br>www.abbottworkholding.com<br>engineering@abbottworkholding.com |                          |
| DRAWN<br>ZGG                                                                                                                                                                              | DATE<br>02/01/24         | CUSTOMER:<br>Stock                                                                                                                                                                                 |                          |
| MATERIAL<br>713                                                                                                                                                                           | WEIGHT (POUNDS)<br>121.2 | SIZE<br>A                                                                                                                                                                                          | Part Name<br>N628-400DIN |
| STYLE<br>TC                                                                                                                                                                               | DISPOSITION<br>Released  | REV.<br>--                                                                                                                                                                                         |                          |