

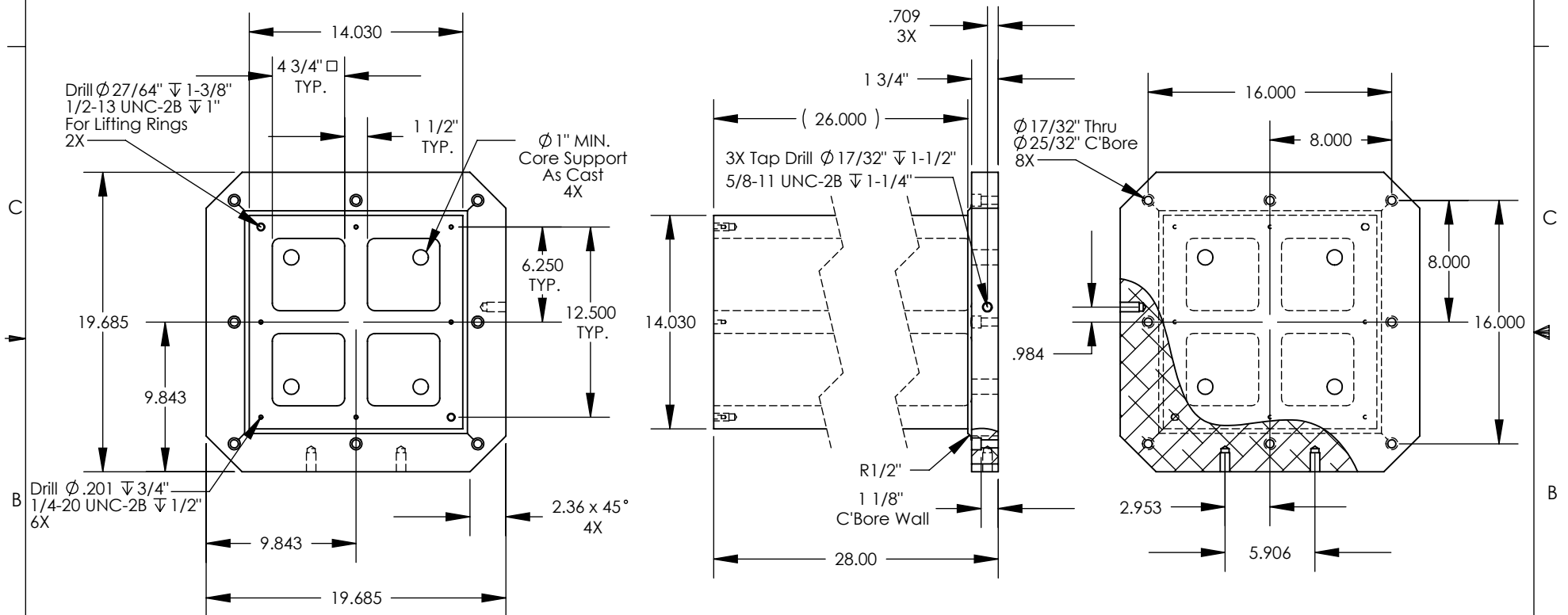
NOTES: Unless otherwise specified.

1. Machined surfaces \perp .001 in 12" \parallel .002 in 12" \square .001 in 12"

2. Deburr and break all sharp edges.

THE INFORMATION CONTAINED IN THIS DRAWING IS THE SOLE PROPERTY OF ABBOTT WORKHOLDING PRODUCTS. ANY REPRODUCTION IN PART OR WHOLE WITHOUT THE WRITTEN PERMISSION OF ABBOTT WORKHOLDING PRODUCTS IS PROHIBITED.

Includes NR14TP Top Plate And (2) Lifting Rings Installed



UNLESS OTHERWISE SPECIFIED
DIMENSIONS ARE IN INCHES
TOLERANCES ARE:
FRACTIONS DECIMALS ANGLES
 $\pm 1/32$.XX $\pm .015$ $\pm 5^\circ$
.XXX $\pm .005$
.XXXX $\pm .0005$

| | |
|-----------------|--------------------------|
| DRAWN ZGG | DATE 04/29/20 |
| MATERIAL 713 | WEIGHT (POUNDS) 354.7 |
| STYLE TC | DISPOSITION Released |

Abbott Workholding Products

430 McCall Road
Manhattan, KS 66502

785-776-8555

785-587-0004 Fax

800-528-6459

www.abbottworkholding.com

engineering@abbottworkholding.com

CUSTOMER:
Stock

SIZE
A

Part Name

NR1428-500DMG

REV.
--