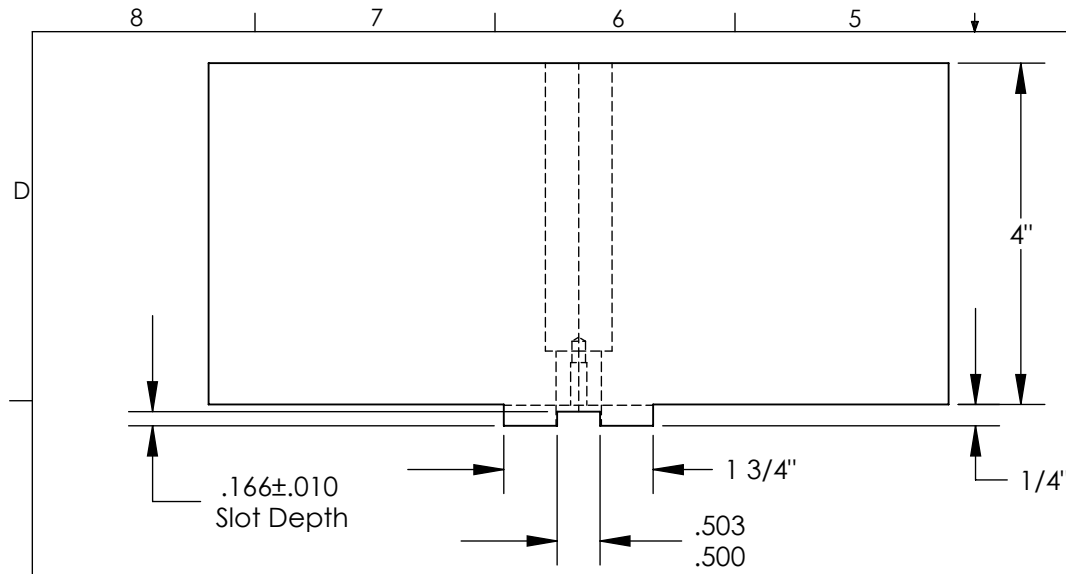
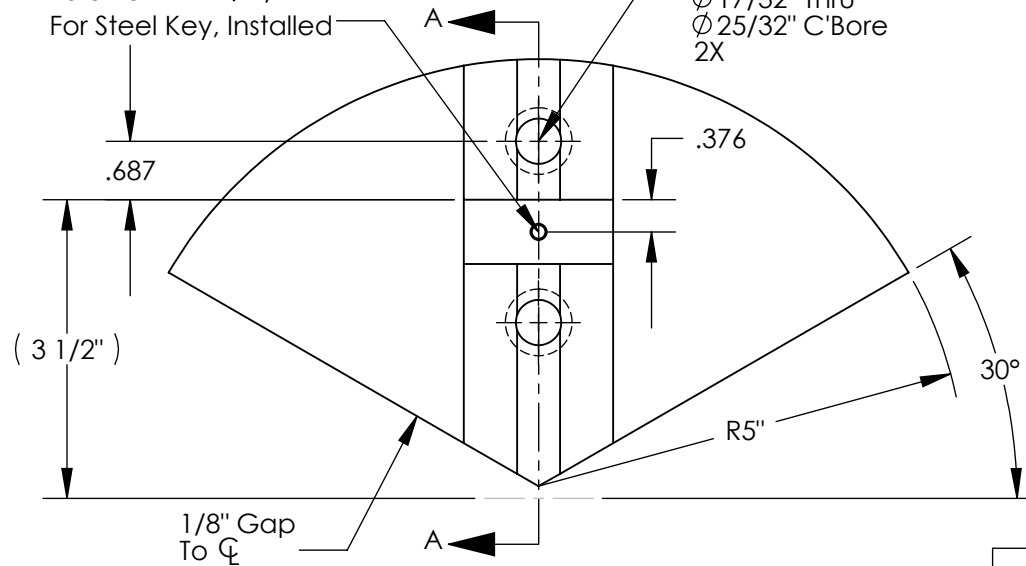


THE INFORMATION CONTAINED IN THIS DRAWING IS THE SOLE PROPERTY OF ABBOTT WORKHOLDING PRODUCTS. ANY REPRODUCTION IN PART OR WHOLE WITHOUT THE WRITTEN PERMISSION OF ABBOTT WORKHOLDING PRODUCTS IS PROHIBITED.



Tap Drill $\phi .159 \pm .004$
10-32 UNF-2B $\pm .004$
For Steel Key, Installed

$\phi 17/32$ " Thru
 $\phi 25/32$ " C'Bore
2X



$.240$
Cross Slot Depth

$7/8$ "
C'Bore Wall

$.752$
 $.750$

2.125

SECTION A-A

UNLESS OTHERWISE SPECIFIED
DIMENSIONS ARE IN INCHES
TOLERANCES ARE:
FRACTIONS DECIMALS ANGLES
 $\pm 1/32$ $.XX \pm .015$ $\pm 5^\circ$
 $.XXX \pm .005$
 $.XXXX \pm .0005$

DRAWN ZGG DATE 10/26/16
MATERIAL 6061 WEIGHT (POUNDS) 10.1

STYLE D DISPOSITION Released

Abbott Workholding Products

430 McCall Road
Manhattan, KS 66502

785-776-8555
785-587-0004 Fax

800-528-6459

www.abbottworkholding.com
engineering@abbottworkholding.com

CUSTOMER: Stock

SIZE Part Name
A TG10MDP1

REV. B