

THE INFORMATION CONTAINED IN THIS DRAWING IS THE SOLE PROPERTY OF ABBOTT WORKHOLDING PRODUCTS. ANY REPRODUCTION IN PART OR WHOLE WITHOUT THE WRITTEN PERMISSION OF ABBOTT WORKHOLDING PRODUCTS IS PROHIBITED.

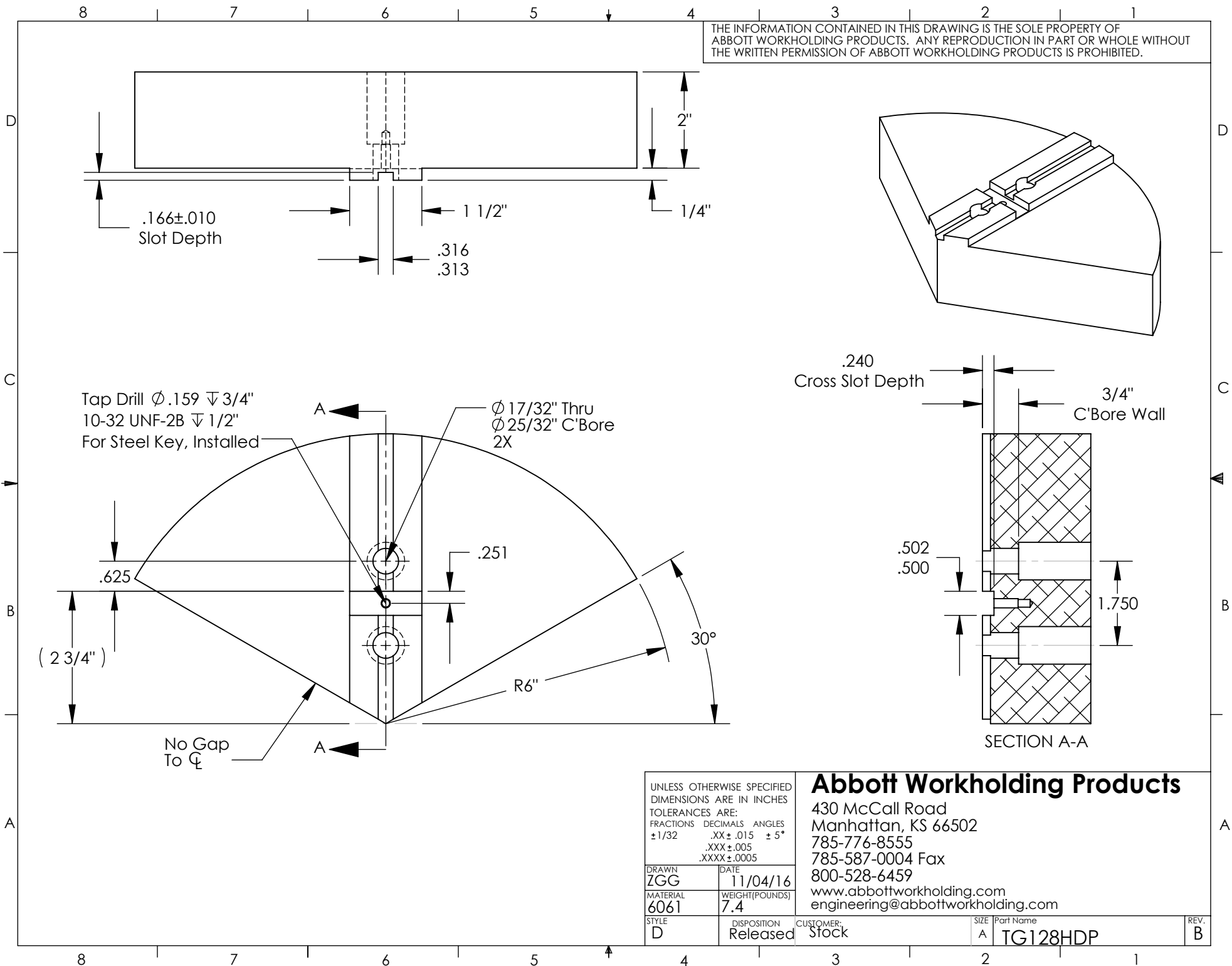
Technical drawing of a mechanical part, showing a cross-section (SECTION A-A) and a side view. The drawing includes dimensions for slot depth, bore diameter, and radii.

Key dimensions and features:

- Slot Depth: $.166 \pm .010$
- Slot Width: $1 \frac{1}{2}$ "
- Slot Position: $1 \frac{1}{4}$ "
- Slot Depth (Side View): $.240$ Cross Slot Depth
- Slot Width (Side View): $\frac{3}{4}$ " C'Bore Wall
- Slot Depth (Side View): $.502$ and $.500$
- Slot Width (Side View): 1.750
- Slot Position (Side View): $.251$
- Slot Depth (Side View): $.625$
- Slot Width (Side View): $2 \frac{3}{4}$ "
- Slot Position (Side View): $R6"$
- Slot Angle: 30°
- Slot Depth (Side View): $.251$
- Slot Width (Side View): $.625$
- Slot Position (Side View): $2 \frac{3}{4}$ "
- Slot Angle: 30°
- Slot Depth (Side View): $.251$
- Slot Width (Side View): $.625$
- Slot Position (Side View): $2 \frac{3}{4}$ "
- Slot Angle: 30°

SECTION A-A

UNLESS OTHERWISE SPECIFIED DIMENSIONS ARE IN INCHES TOLERANCES ARE: FRACTIONS DECIMALS ANGLES $\pm 1/32$.XX $\pm .015$ $\pm 5^\circ$.XXX $\pm .005$.XXXX $\pm .0005$				Abbott Workholding Products 430 McCall Road Manhattan, KS 66502 785-776-8555 785-587-0004 Fax 800-528-6459 www.abbottworkholding.com engineering@abbottworkholding.com			
DRAWN ZGG		DATE 11/04/16		CUSTOMER: Stock		REV. B	
MATERIAL 6061		WEIGHT(POUNDS) 7.4		SIZE A		Part Name TG128HDP	
STYLE D		DISPOSITION Released		SIZE A		Part Name TG128HDP	



THE INFORMATION CONTAINED IN THIS DRAWING IS THE SOLE PROPERTY OF ABBOTT WORKHOLDING PRODUCTS. ANY REPRODUCTION IN PART OR WHOLE WITHOUT THE WRITTEN PERMISSION OF ABBOTT WORKHOLDING PRODUCTS IS PROHIBITED.

Dimensions:

- .166±.010 Slot Depth
- 1 1/2"
- .316 / .313
- 2"
- 1/4"
- Ø 17/32" Thru Ø 25/32" C'Bore 2X
- Tap Drill Ø .159 ∇ 3/4" 10-32 UNF-2B ∇ 1/2" For Steel Key, Installed
- .625
- (2 3/4")
- No Gap To ϕ
- R6"
- 30°
- .251
- .240 Cross Slot Depth
- 3/4" C'Bore Wall
- .502 / .500
- 1.750

SECTION A-A

UNLESS OTHERWISE SPECIFIED DIMENSIONS ARE IN INCHES TOLERANCES ARE: FRACTIONS DECIMALS ANGLES ±1/32 .XX ± .015 ± 5° .XXX ± .005 .XXXX ± .0005		Abbott Workholding Products 430 McCall Road Manhattan, KS 66502 785-776-8555 785-587-0004 Fax 800-528-6459 www.abbottworkholding.com engineering@abbottworkholding.com	
DRAWN ZGG	DATE 11/04/16	CUSTOMER: Stock	REV. B
MATERIAL 6061	WEIGHT(POUNDS) 7.4	SIZE A	Part Name TG128HDP
STYLE D	DISPOSITION Released		

THE INFORMATION CONTAINED IN THIS DRAWING IS THE SOLE PROPERTY OF ABBOTT WORKHOLDING PRODUCTS. ANY REPRODUCTION IN PART OR WHOLE WITHOUT THE WRITTEN PERMISSION OF ABBOTT WORKHOLDING PRODUCTS IS PROHIBITED.

Technical drawing of a mechanical part, showing a cross-section (SECTION A-A) and a side view. The drawing includes dimensions for slot depth, hole diameters, radii, and angles.

Key dimensions and features:

- Slot Depth: $.166 \pm .010$
- Slot Width: $1 \frac{1}{2}$ "
- Slot Depth (Side View): $.240$ Cross Slot Depth
- Slot Width (Side View): $\frac{3}{4}$ " C'Bore Wall
- Section A-A Dimensions: $.502$, $.500$, 1.750
- Section A-A Label: SECTION A-A
- Top View Dimensions: $\phi 17/32$ " Thru $\phi 25/32$ " C'Bore 2X, $.251$, $.625$, $(2 \frac{3}{4})$, $R6$, 30°
- Top View Label: No Gap To ϕ
- Top View Label: Tap Drill $\phi .159 \nabla 3/4$ " 10-32 UNF-2B $\nabla 1/2$ " For Steel Key, Installed

UNLESS OTHERWISE SPECIFIED DIMENSIONS ARE IN INCHES TOLERANCES ARE:			
FRACTIONS	DECIMALS	ANGLES	
$\pm 1/32$	$.XX \pm .015$	$\pm 5^\circ$	
	$.XXX \pm .005$		
	$.XXXX \pm .0005$		

DRAWN	DATE
ZGG	11/04/16

MATERIAL	WEIGHT(POUNDS)
6061	7.4

STYLE	DISPOSITION	CUSTOMER	SIZE	Part Name	REV.
D	Released	Stock	A	TG128HDP	B

Abbott Workholding Products
430 McCall Road
Manhattan, KS 66502
785-776-8555
785-587-0004 Fax
800-528-6459
www.abbottworkholding.com
engineering@abbottworkholding.com

THE INFORMATION CONTAINED IN THIS DRAWING IS THE SOLE PROPERTY OF ABBOTT WORKHOLDING PRODUCTS. ANY REPRODUCTION IN PART OR WHOLE WITHOUT THE WRITTEN PERMISSION OF ABBOTT WORKHOLDING PRODUCTS IS PROHIBITED.

Top View Dimensions:

- Overall Width: 8"
- Overall Height: 2 3/4"
- Slot Depth: .166 ± .010
- Slot Width: 1 1/2"
- Slot Position: .316 / .313
- Keyway: Tap Drill $\phi .159 \nabla 3/4"$, 10-32 UNF-2B $\nabla 1/2"$ For Steel Key, Installed
- Bore: $\phi 17/32"$ Thru, $\phi 25/32"$ C'Bore 2X
- Radius: R6"
- Angle: 30°
- Gap: No Gap To ϕ

Side View Dimensions:

- Overall Height: 2"
- Slot Width: 1/4"

Cross Section A-A Dimensions:

- Overall Width: 8"
- Overall Height: 1.750"
- Slot Depth: .240
- Slot Width: 3/4" C'Bore Wall
- Keyway: .502 / .500

SECTION A-A

UNLESS OTHERWISE SPECIFIED DIMENSIONS ARE IN INCHES TOLERANCES ARE:			
FRACTIONS	DECIMALS	ANGLES	
$\pm 1/32$.XX ± .015	± 5°	
	.XXX ± .005		
	.XXXX ± .0005		

DRAWN	DATE
ZGG	11/04/16

MATERIAL	WEIGHT(POUNDS)
6061	7.4

STYLE	DISPOSITION	CUSTOMER	SIZE	Part Name	REV.
D	Released	Stock	A	TG128HDP	B

Abbott Workholding Products
430 McCall Road
Manhattan, KS 66502
785-776-8555
785-587-0004 Fax
800-528-6459
www.abbottworkholding.com
engineering@abbottworkholding.com

8 7 6 5 4 3 2 1

THE INFORMATION CONTAINED IN THIS DRAWING IS THE SOLE PROPERTY OF ABBOTT WORKHOLDING PRODUCTS. ANY REPRODUCTION IN PART OR WHOLE WITHOUT THE WRITTEN PERMISSION OF ABBOTT WORKHOLDING PRODUCTS IS PROHIBITED.

2"
1/4"
1 1/2"
.316
.313
.166±.010 Slot Depth

Tap Drill $\varnothing .159 \nabla 3/4"$
10-32 UNF-2B $\nabla 1/2"$
For Steel Key, Installed

$\varnothing 17/32"$ Thru
 $\varnothing 25/32"$ C'Bore
2X

.625
(2 3/4")
R6"
30°
.251
No Gap To \varnothing

.240
Cross Slot Depth
3/4"
C'Bore Wall

.502
.500
1.750

SECTION A-A

UNLESS OTHERWISE SPECIFIED
DIMENSIONS ARE IN INCHES
TOLERANCES ARE:
FRACTIONS DECIMALS ANGLES
 $\pm 1/32$.XX ± .015 ± 5°
.XXX ± .005
.XXXX ± .0005

DRAWN ZGG DATE 11/04/16
MATERIAL 6061 WEIGHT (POUNDS) 7.4
STYLE D DISPOSITION Released CUSTOMER: Stock

Abbott Workholding Products
430 McCall Road
Manhattan, KS 66502
785-776-8555
785-587-0004 Fax
800-528-6459
www.abbottworkholding.com
engineering@abbottworkholding.com

SIZE Part Name
A TG128HDP

REV. B

8 7 6 5 4 3 2 1

THE INFORMATION CONTAINED IN THIS DRAWING IS THE SOLE PROPERTY OF ABBOTT WORKHOLDING PRODUCTS. ANY REPRODUCTION IN PART OR WHOLE WITHOUT THE WRITTEN PERMISSION OF ABBOTT WORKHOLDING PRODUCTS IS PROHIBITED.

Technical drawing of a mechanical part, showing a cross-section (SECTION A-A) and a side view. The drawing includes dimensions for slot depth, hole diameters, radii, and angles.

Key dimensions and features:

- Slot Depth: $.166 \pm .010$
- Slot Width: $1 \frac{1}{2}$ "
- Slot Depth (Side View): $.240$ Cross Slot Depth
- Slot Width (Side View): $\frac{3}{4}$ " C'Bore Wall
- Section A-A Dimensions: $.502$, $.500$, 1.750
- Section A-A Label: SECTION A-A
- Top View Dimensions: $\phi .159 \nabla \frac{3}{4}$ 10-32 UNF-2B $\nabla \frac{1}{2}$ For Steel Key, Installed; $\phi 17/32$ " Thru $\phi 25/32$ " C'Bore 2X; $.251$; $.625$; $(2 \frac{3}{4})$; $R6$ "; 30° ; $.316$; $.313$; 2 "; $1/4$ "
- Section A-A Label: SECTION A-A
- Section A-A Dimensions: $.502$, $.500$, 1.750
- Section A-A Label: SECTION A-A

UNLESS OTHERWISE SPECIFIED DIMENSIONS ARE IN INCHES TOLERANCES ARE: FRACTIONS DECIMALS ANGLES $\pm 1/32$ $.XX \pm .015 \pm 5^\circ$ $.XXX \pm .005$ $.XXXX \pm .0005$				Abbott Workholding Products 430 McCall Road Manhattan, KS 66502 785-776-8555 785-587-0004 Fax 800-528-6459 www.abbottworkholding.com engineering@abbottworkholding.com			
DRAWN ZGG		DATE 11/04/16		CUSTOMER: Stock		REV. B	
MATERIAL 6061		WEIGHT(POUNDS) 7.4		SIZE A		Part Name TG128HDP	
STYLE D		DISPOSITION Released		SIZE A		Part Name TG128HDP	

THE INFORMATION CONTAINED IN THIS DRAWING IS THE SOLE PROPERTY OF ABBOTT WORKHOLDING PRODUCTS. ANY REPRODUCTION IN PART OR WHOLE WITHOUT THE WRITTEN PERMISSION OF ABBOTT WORKHOLDING PRODUCTS IS PROHIBITED.

Technical drawing of a mechanical part, showing a cross-section (SECTION A-A) and a side view. The drawing includes dimensions for slot depth, bore diameter, and radii.

Dimensions and Features:

- Slot Depth: $.166 \pm .010$
- Slot Width: $1 \frac{1}{2}$ "
- Slot Height: 2 "
- Slot Width (Bottom): $.316$ and $.313$
- Slot Width (Top): $1 \frac{1}{4}$ "
- Tap Drill: $\phi .159 \nabla 3/4$ "
- 10-32 UNF-2B $\nabla 1/2$ " For Steel Key, Installed
- Bore Diameter: $\phi 17/32$ " Thru $\phi 25/32$ " C'Bore 2X
- Radius: $R6$ "
- Angle: 30°
- Dimension: $.625$
- Dimension: $.251$
- Dimension: $.240$ Cross Slot Depth
- Dimension: $3/4$ " C'Bore Wall
- Dimension: $.502$
- Dimension: $.500$
- Dimension: 1.750
- Section: SECTION A-A
- Dimension: $(2 \frac{3}{4})$
- Dimension: $.166 \pm .010$ Slot Depth
- Dimension: $1 \frac{1}{2}$ "
- Dimension: 2 "
- Dimension: $1 \frac{1}{4}$ "
- Dimension: $.316$
- Dimension: $.313$
- Dimension: $.625$
- Dimension: $.251$
- Dimension: $.240$ Cross Slot Depth
- Dimension: $3/4$ " C'Bore Wall
- Dimension: $.502$
- Dimension: $.500$
- Dimension: 1.750
- Section: SECTION A-A
- Dimension: $(2 \frac{3}{4})$
- Dimension: $.166 \pm .010$ Slot Depth
- Dimension: $1 \frac{1}{2}$ "
- Dimension: 2 "
- Dimension: $1 \frac{1}{4}$ "
- Dimension: $.316$
- Dimension: $.313$
- Dimension: $.625$
- Dimension: $.251$
- Dimension: $.240$ Cross Slot Depth
- Dimension: $3/4$ " C'Bore Wall
- Dimension: $.502$
- Dimension: $.500$
- Dimension: 1.750
- Section: SECTION A-A

UNLESS OTHERWISE SPECIFIED
DIMENSIONS ARE IN INCHES
TOLERANCES ARE:
FRACTIONS DECIMALS ANGLES
 $\pm 1/32$.XX $\pm .015$ $\pm 5^\circ$
.XXX $\pm .005$
.XXXX $\pm .0005$

DRAWN: ZGG
DATE: 11/04/16
MATERIAL: 6061
WEIGHT (POUNDS): 7.4
STYLE: D
DISPOSITION: Released
CUSTOMER: Stock

Abbott Workholding Products
430 McCall Road
Manhattan, KS 66502
785-776-8555
785-587-0004 Fax
800-528-6459
www.abbottworkholding.com
engineering@abbottworkholding.com

SIZE: A
Part Name: TG128HDP
REV: B

THE INFORMATION CONTAINED IN THIS DRAWING IS THE SOLE PROPERTY OF ABBOTT WORKHOLDING PRODUCTS. ANY REPRODUCTION IN PART OR WHOLE WITHOUT THE WRITTEN PERMISSION OF ABBOTT WORKHOLDING PRODUCTS IS PROHIBITED.

Technical drawing of a mechanical part, showing a cross-section (SECTION A-A) and a side view. The drawing includes dimensions for slot depth, hole diameters, radii, and angles.

Key dimensions and features:

- Slot Depth: $.166 \pm .010$
- Slot Width: $1 \frac{1}{2}$ "
- Slot Depth (Side View): $.240$ Cross Slot Depth
- Slot Width (Side View): $\frac{3}{4}$ " C'Bore Wall
- Section A-A Dimensions: $.502$, $.500$, 1.750
- Section A-A Label: SECTION A-A
- Top View Dimensions: $\phi .159 \nabla \frac{3}{4}$ 10-32 UNF-2B $\nabla \frac{1}{2}$ For Steel Key, Installed; $\phi 17/32$ " Thru $\phi 25/32$ " C'Bore 2X; $.251$; $.625$; $(2 \frac{3}{4})$; $R6$ "; 30° ; $.316$; $.313$; 2 "; $1/4$ "
- Section A-A Label: SECTION A-A
- Section A-A Dimensions: $.502$, $.500$, 1.750
- Section A-A Label: SECTION A-A

UNLESS OTHERWISE SPECIFIED DIMENSIONS ARE IN INCHES TOLERANCES ARE: FRACTIONS DECIMALS ANGLES $\pm 1/32$ $.XX \pm .015 \pm 5^\circ$ $.XXX \pm .005$ $.XXXX \pm .0005$				Abbott Workholding Products 430 McCall Road Manhattan, KS 66502 785-776-8555 785-587-0004 Fax 800-528-6459 www.abbottworkholding.com engineering@abbottworkholding.com			
DRAWN ZGG		DATE 11/04/16		CUSTOMER: Stock		REV. B	
MATERIAL 6061		WEIGHT(POUNDS) 7.4		SIZE A		Part Name TG128HDP	
STYLE D		DISPOSITION Released		SIZE A		Part Name TG128HDP	

THE INFORMATION CONTAINED IN THIS DRAWING IS THE SOLE PROPERTY OF ABBOTT WORKHOLDING PRODUCTS. ANY REPRODUCTION IN PART OR WHOLE WITHOUT THE WRITTEN PERMISSION OF ABBOTT WORKHOLDING PRODUCTS IS PROHIBITED.

Technical drawing of a mechanical part, showing a cross-section (SECTION A-A) and a side view. The drawing includes dimensions for slot depth, hole diameters, radii, and angles.

Key dimensions and features:

- Slot Depth: $.166 \pm .010$
- Slot Width: $1 \frac{1}{2}$ "
- Slot Depth (Side View): $.240$ Cross Slot Depth
- Slot Width (Side View): $\frac{3}{4}$ " C'Bore Wall
- Section A-A Dimensions: $.502$, $.500$, 1.750
- Section A-A Label: SECTION A-A
- Top View Dimensions: $\phi .159 \nabla 3/4$ 10-32 UNF-2B $\nabla 1/2$ " For Steel Key, Installed; $\phi 17/32$ " Thru $\phi 25/32$ " C'Bore 2X; $.251$; $.625$; $(2 \frac{3}{4})$; $R6$ "; 30° ; $.316$; $.313$; 2 "; $1/4$ "
- Section A-A Label: SECTION A-A
- Section A-A Dimensions: $.502$, $.500$, 1.750
- Section A-A Label: SECTION A-A

UNLESS OTHERWISE SPECIFIED DIMENSIONS ARE IN INCHES TOLERANCES ARE: FRACTIONS DECIMALS ANGLES $\pm 1/32$ $.XX \pm .015$ $\pm 5^\circ$ $.XXX \pm .005$ $.XXXX \pm .0005$				Abbott Workholding Products 430 McCall Road Manhattan, KS 66502 785-776-8555 785-587-0004 Fax 800-528-6459 www.abbottworkholding.com engineering@abbottworkholding.com			
DRAWN ZGG		DATE 11/04/16		CUSTOMER: Stock		REV. B	
MATERIAL 6061		WEIGHT (POUNDS) 7.4		SIZE A		Part Name TG128HDP	
STYLE D		DISPOSITION Released		SIZE A		Part Name TG128HDP	

THE INFORMATION CONTAINED IN THIS DRAWING IS THE SOLE PROPERTY OF ABBOTT WORKHOLDING PRODUCTS. ANY REPRODUCTION IN PART OR WHOLE WITHOUT THE WRITTEN PERMISSION OF ABBOTT WORKHOLDING PRODUCTS IS PROHIBITED.

The drawing includes three main views:

- Front View:** Shows a semi-circular profile with a central vertical slot. Dimensions include a total width of 8 inches, a slot depth of .166 ± .010, a slot width of 1 1/2 inches, and a central bore diameter of Ø 17/32 inch through a C'bore wall of Ø 25/32 inch. The bottom radius is R6 inches at a 30-degree angle.
- Top View:** Shows the circular end face with two holes spaced 2 3/4 inches apart. It specifies a tap drill of Ø .159 x 3/4 inch, 10-32 UNF-2B x 1/2 inch for a steel key.
- Cross Section A-A:** Shows the internal features, including a cross slot with a depth of .240 and a wall thickness of 3/4 inch. It also shows a .502 thick layer and a .500 thick layer, with a total height of 1.750.

UNLESS OTHERWISE SPECIFIED
DIMENSIONS ARE IN INCHES
TOLERANCES ARE:
FRACTIONS DECIMALS ANGLES
± 1/32 .XX ± .015 ± 5°
.XXX ± .005
.XXXX ± .0005

DRAWN ZGG	DATE 11/04/16
MATERIAL 6061	WEIGHT(POUNDS) 7.4
STYLE D	DISPOSITION Released

Abbott Workholding Products
430 McCall Road
Manhattan, KS 66502
785-776-8555
785-587-0004 Fax
800-528-6459
www.abbottworkholding.com
engineering@abbottworkholding.com

SIZE A	Part Name TG128HDP	REV. B
-----------	-----------------------	-----------