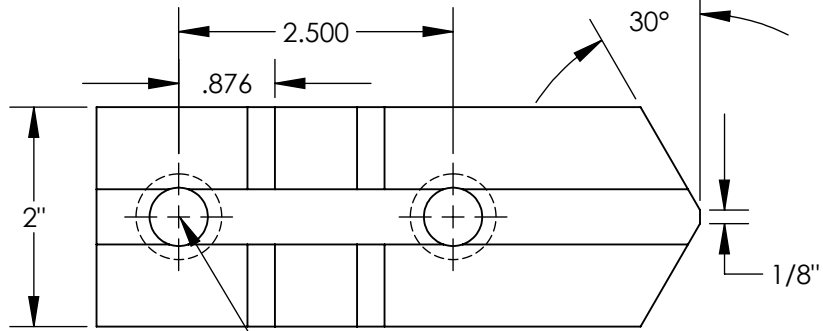
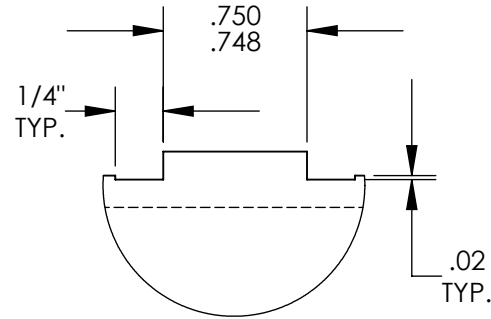


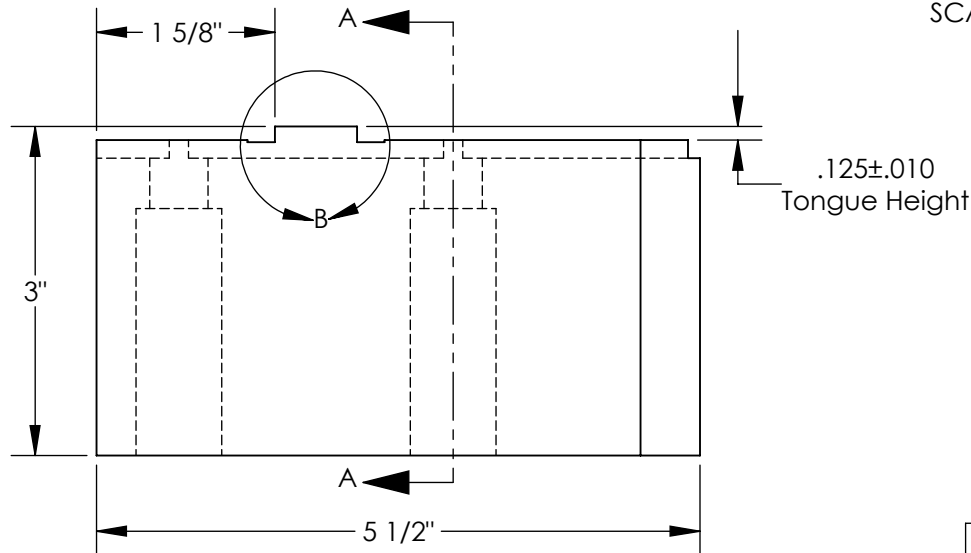
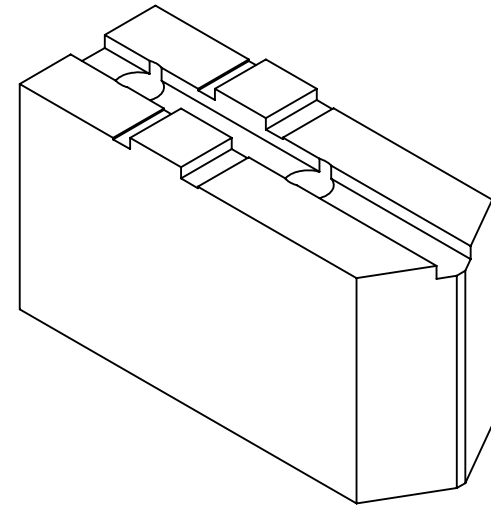
THE INFORMATION CONTAINED IN THIS DRAWING IS THE SOLE PROPERTY OF ABBOTT WORKHOLDING PRODUCTS. ANY REPRODUCTION IN PART OR WHOLE WITHOUT THE WRITTEN PERMISSION OF ABBOTT WORKHOLDING PRODUCTS IS PROHIBITED.



$\phi 17/32$ " Thru
 $\phi 25/32$ " C'Bore
2X

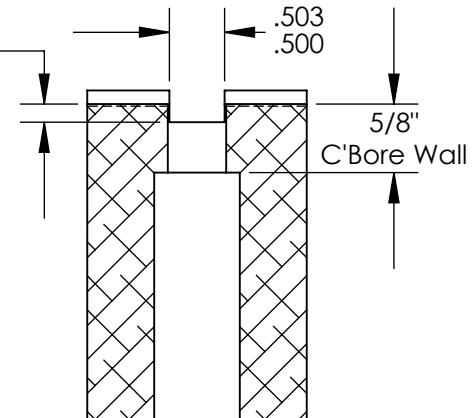


DETAIL B
SCALE 1 : 1



.125±.010
Tongue Height

.166±.010
Slot Depth



SECTION A-A

UNLESS OTHERWISE SPECIFIED
DIMENSIONS ARE IN INCHES
TOLERANCES ARE:
FRACTIONS DECIMALS ANGLES
 $\pm 1/32$.XX ± .015 $\pm 5^\circ$
.XXX ± .005
.XXXX ± .0005

DRAWN ZGG	DATE 09/30/20
MATERIAL 1018	WEIGHT (POUNDS) 7.9
STYLE A	DISPOSITION Released

Abbott Workholding Products

430 McCall Road
Manhattan, KS 66502

785-776-8555

785-587-0004 Fax

800-528-6459

www.abbottworkholding.com

engineering@abbottworkholding.com

CUSTOMER:
Stock

SIZE Part Name
A TG12MDS1

REV.
B