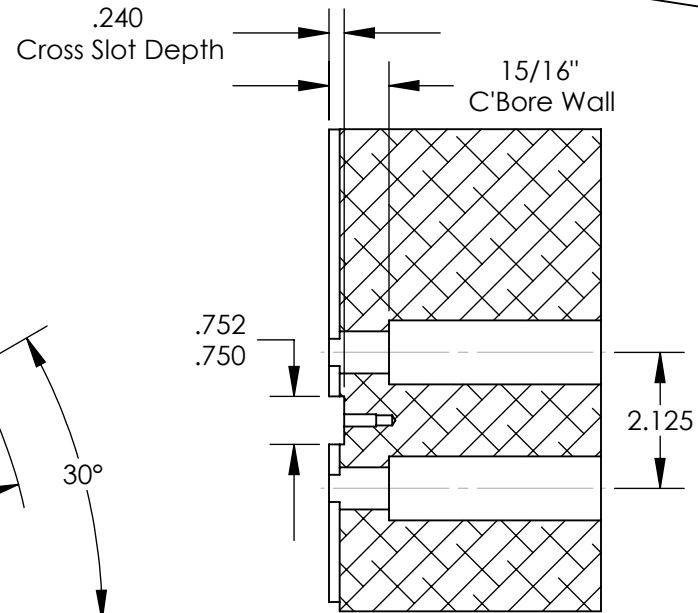
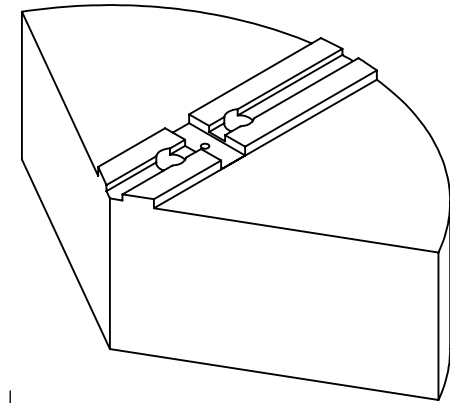
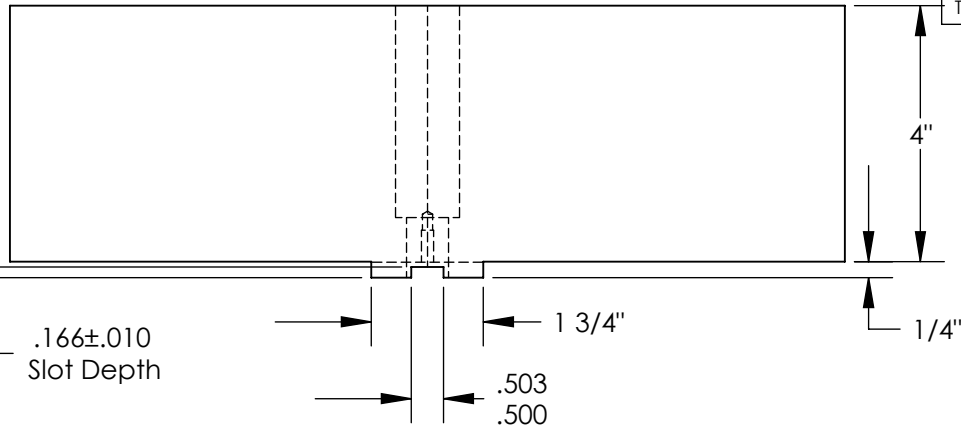
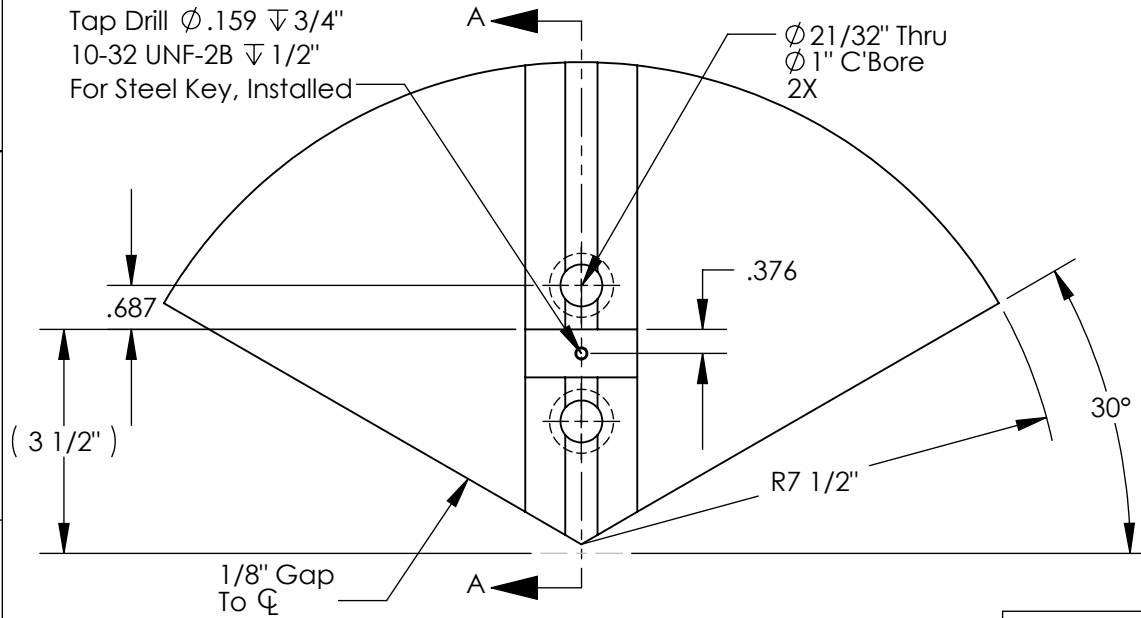


THE INFORMATION CONTAINED IN THIS DRAWING IS THE SOLE PROPERTY OF ABBOTT WORKHOLDING PRODUCTS. ANY REPRODUCTION IN PART OR WHOLE WITHOUT THE WRITTEN PERMISSION OF ABBOTT WORKHOLDING PRODUCTS IS PROHIBITED.



Tap Drill $\varnothing .159 \nabla 3/4"$
10-32 UNF-2B $\nabla 1/2"$
For Steel Key, Installed



SECTION A-A

UNLESS OTHERWISE SPECIFIED
DIMENSIONS ARE IN INCHES
TOLERANCES ARE:
FRACTIONS DECIMALS ANGLES
 $\pm 1/32$.XX $\pm .015$ $\pm 5^\circ$
.XXX $\pm .005$
.XXXX $\pm .0005$

Abbott Workholding Products

430 McCall Road
Manhattan, KS 66502

785-776-8555

785-587-0004 Fax

800-528-6459

www.abbottworkholding.com

engineering@abbottworkholding.com

DRAWN ZGG	DATE 10/26/16
MATERIAL 6061	WEIGHT (POUNDS) 22.9
STYLE D	DISPOSITION Released

CUSTOMER:
Stock

SIZE A	Part Name TG1510HDP1
-----------	-------------------------

REV. B
