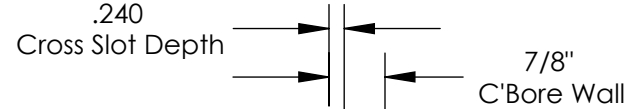
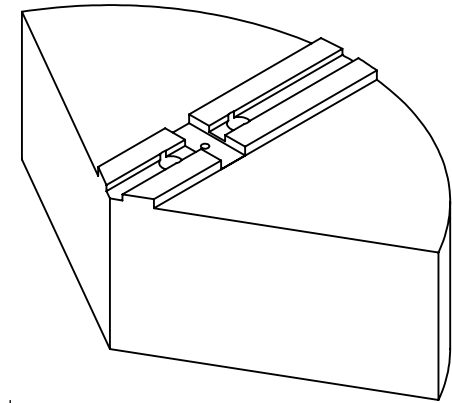
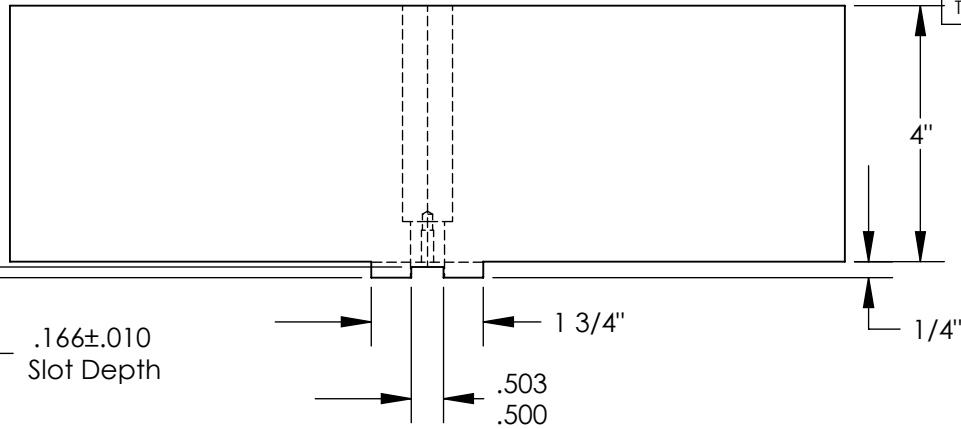
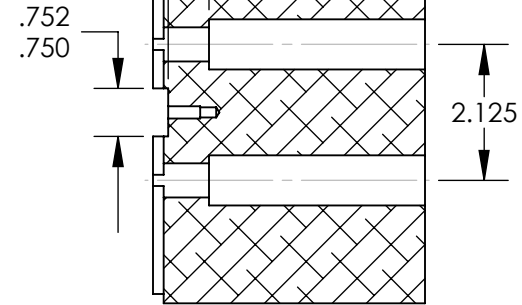
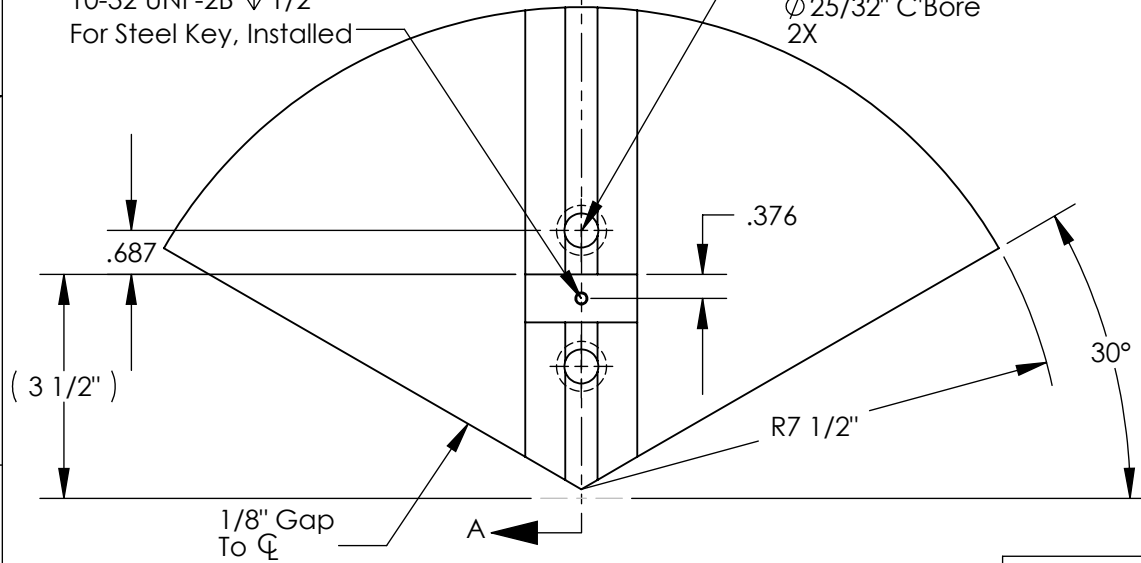


THE INFORMATION CONTAINED IN THIS DRAWING IS THE SOLE PROPERTY OF ABBOTT WORKHOLDING PRODUCTS. ANY REPRODUCTION IN PART OR WHOLE WITHOUT THE WRITTEN PERMISSION OF ABBOTT WORKHOLDING PRODUCTS IS PROHIBITED.



Tap Drill  $\phi .159 \nabla 3/4"$   
10-32 UNF-2B  $\nabla 1/2"$   
For Steel Key, Installed

$\phi 17/32"$  Thru  
 $\phi 25/32"$  C'Bore  
2X



SECTION A-A

UNLESS OTHERWISE SPECIFIED  
DIMENSIONS ARE IN INCHES  
TOLERANCES ARE:  
FRACTIONS DECIMALS ANGLES  
 $\pm 1/32$  .XX  $\pm .015$   $\pm 5^\circ$   
.XXX  $\pm .005$   
.XXXX  $\pm .0005$

DRAWN ZGG	DATE 10/26/16
MATERIAL 6061	WEIGHT(POUNDS) 23.1
STYLE D	DISPOSITION Released

## Abbott Workholding Products

430 McCall Road  
Manhattan, KS 66502

785-776-8555  
785-587-0004 Fax

800-528-6459

www.abbottworkholding.com  
engineering@abbottworkholding.com

CUSTOMER: Stock	SIZE A	Part Name TG1510MDP1	REV. B
--------------------	-----------	-------------------------	-----------