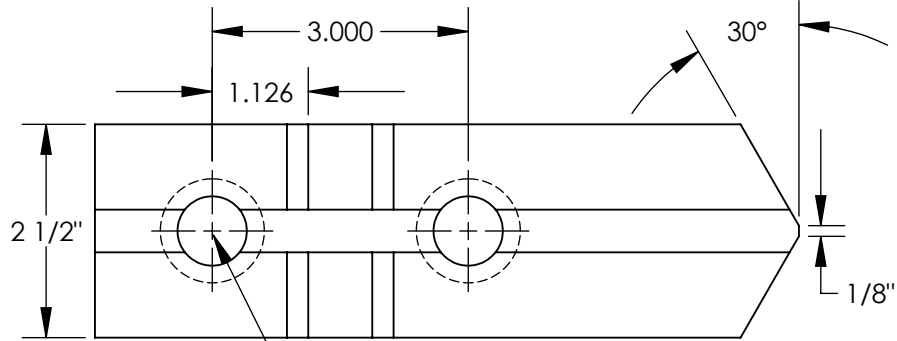
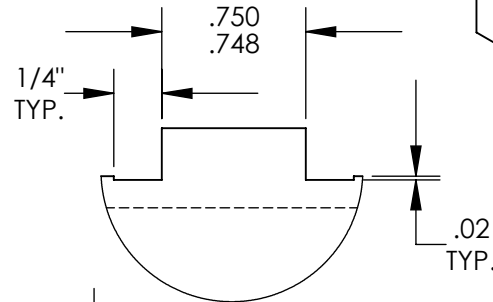


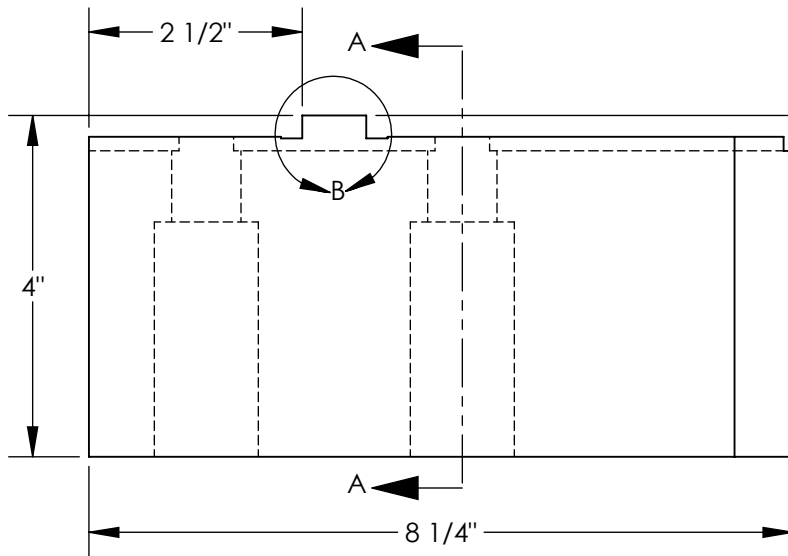
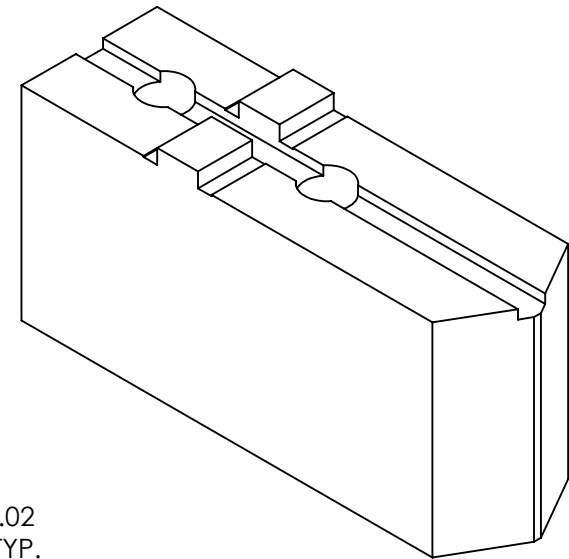
THE INFORMATION CONTAINED IN THIS DRAWING IS THE SOLE PROPERTY OF ABBOTT WORKHOLDING PRODUCTS. ANY REPRODUCTION IN PART OR WHOLE WITHOUT THE WRITTEN PERMISSION OF ABBOTT WORKHOLDING PRODUCTS IS PROHIBITED.



Ø 13/16" Thru
Ø 1 7/32" C'Bore
2X

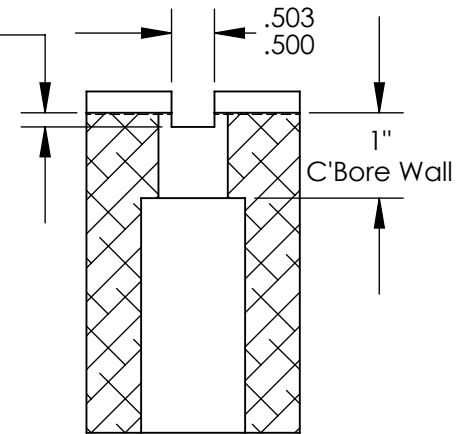


DETAIL B
SCALE 1 : 1



.250±.010
Tongue Height

.166±.010
Slot Depth



SECTION A-A

UNLESS OTHERWISE SPECIFIED
DIMENSIONS ARE IN INCHES
TOLERANCES ARE:
FRACTIONS DECIMALS ANGLES
± 1/32 .XX ± .015 ± 5°
.XXX ± .005
.XXXX ± .0005

DRAWN ZGG	DATE 10/30/20
MATERIAL 6061	WEIGHT (POUNDS) 6.5
STYLE A	DISPOSITION Released

Abbott Workholding Products

430 McCall Road
Manhattan, KS 66502

785-776-8555
785-587-0004 Fax

800-528-6459

www.abbottworkholding.com
engineering@abbottworkholding.com

CUSTOMER:
Stock

SIZE Part Name
A TG21HDA1-M20

REV.
A